

# DIE GEHRY LOUNGE

UNTERGESCHOSS

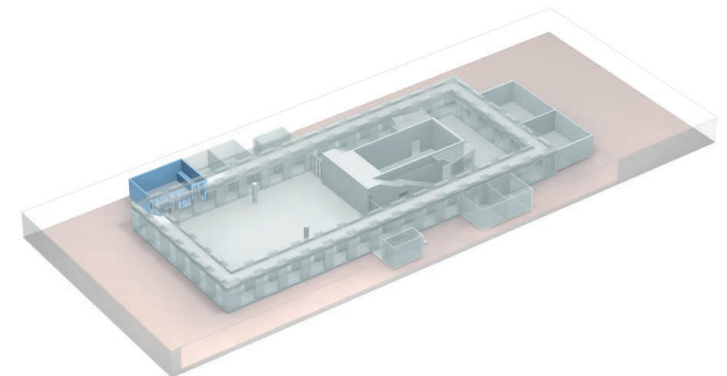


## VERANSTALTUNGSART

- » Cocktailbar & Lounge
- » Empfänge
- » Kaffeepausen
- » Referentenraum
- » VIP Bereich

## INTERIEUR & AUSSTATTUNG

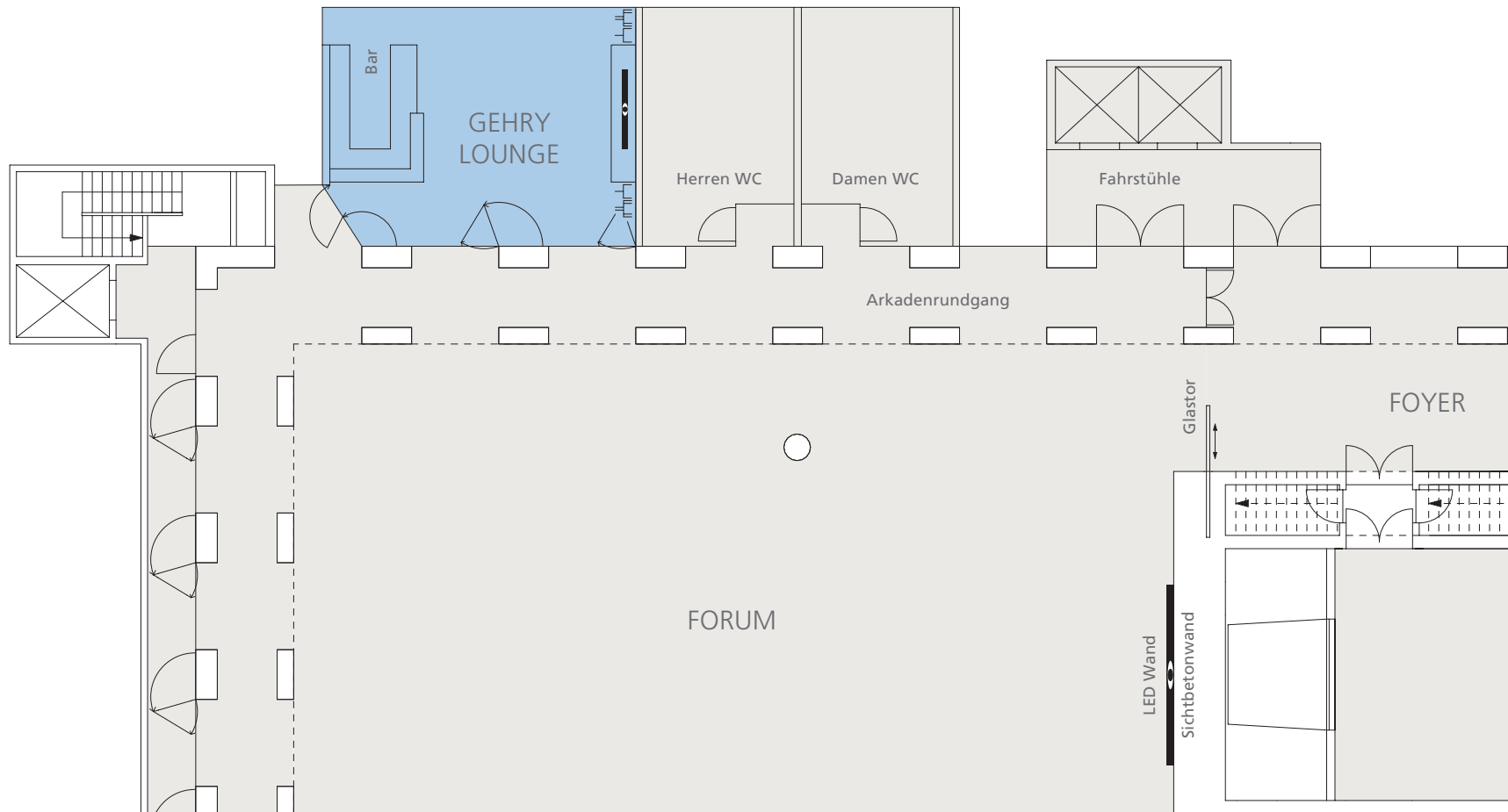
- » Holzbestuhlung, Design by Frank O. Gehry
- » Fest installierte Café- und Cocktailbar
- » Parkettboden
- » Präsentations Monitor 58"
- » W-LAN-Zugang










# DIE GEHRY LOUNGE UNTERSCHOSS

M 1:200



-  Strom
-  Starkstrom
-  Monitor 58"

DIMENSIONEN	
Fläche	70 m <sup>2</sup>
Länge	9,20 m
Breite	7,10 m
Höhe	4,50 m

BESTUHLUNG		
Café-Bestuhlung		35 Personen
Empfang		35 Personen