

# THE PLENUM

## GROUND FLOOR



### EVENT TYPE

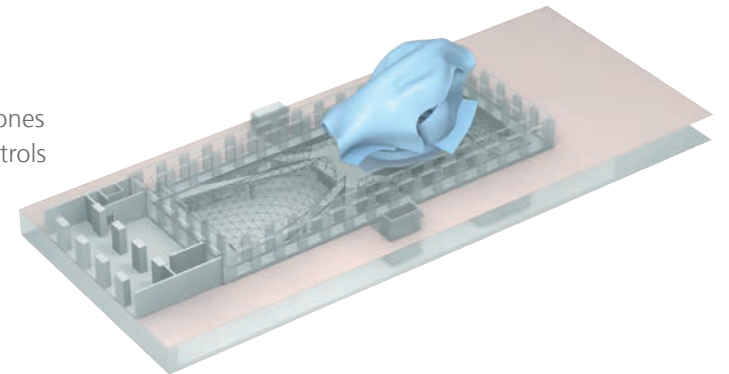
- » press conferences
- » workshops
- » meetings
- » lectures
- » plenary sessions
- » product presentations
- » podium discussions

### INTERIOR & FURNISHING

- » flexible seating within the rows
- » variable speaker positioning
- » flexible seating on the parquet
- » boardroom table
- » sound-proofed wall panels
- » direct daylight

### TECHNOLOGY & EQUIPMENT

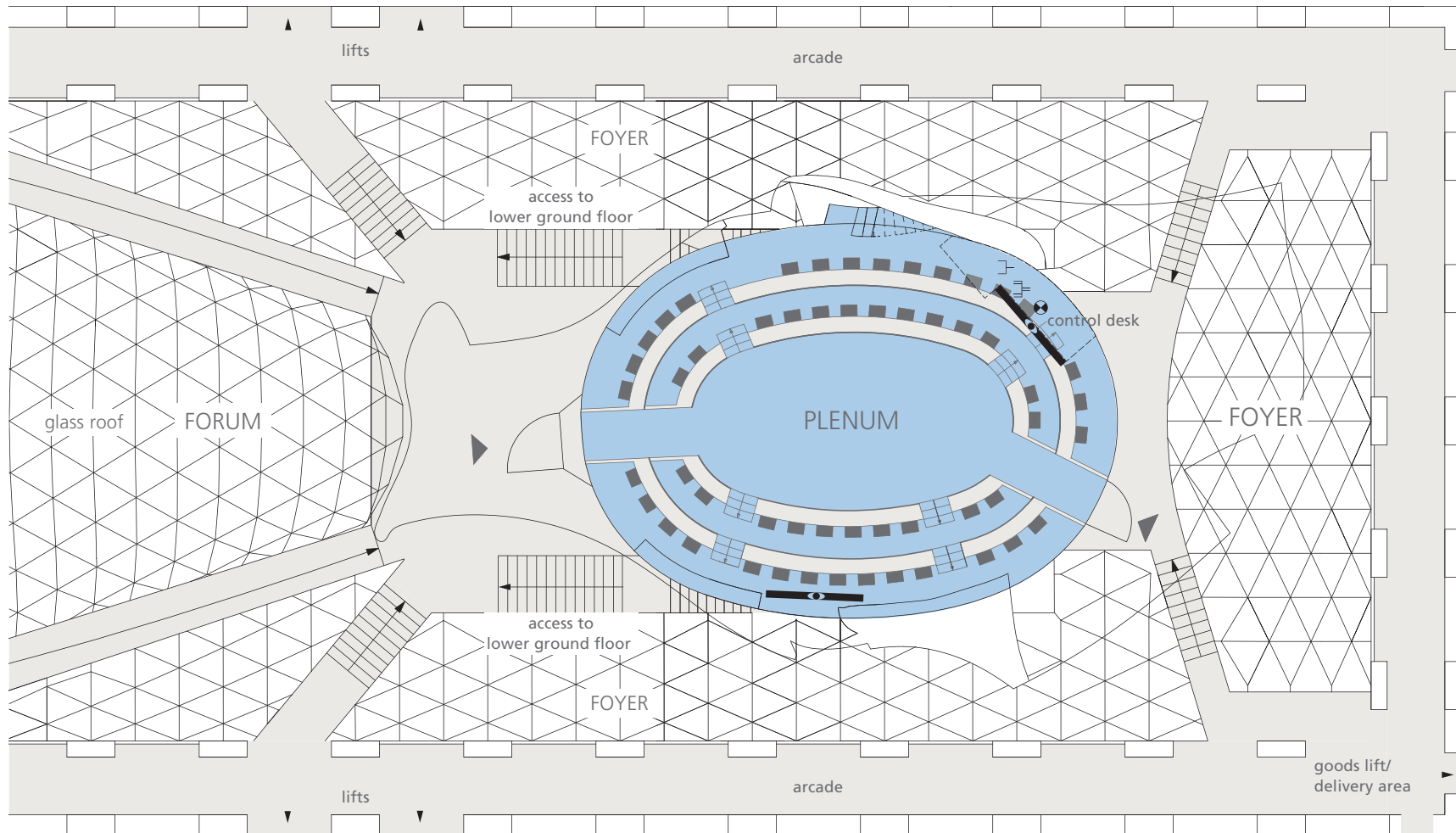
- » sound system with podium miking
- » conference 2-way intercom microphones
- » digital audio / 2-channel graphic controls inclusive external sources
- » 2 108" LCD screens
- » portable 15" preview monitors
- » LED speaker illumination
- » extensive infrastructure (optical fibre, network, XLR and power supply)







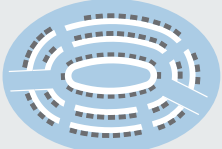
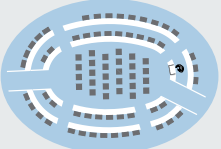
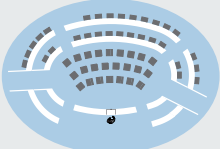


# THE PLENUM GROUND FLOOR

M 1:200



-  access channels to tv and audio transmission
-  3-phase power point
-  power point
-  LCD screen 108"

DIMENSIONS	SEATING CAPACITY BOARDROOM	THEATRE	PODIUM
Area 188 m <sup>2</sup>	 <p>maximum 74 delegates parquet 20 delegates seating rows 54 delegates</p>	 <p>maximum 80 delegates parquet 28 delegates seating rows 52 delegates</p>	 <p>maximum 54 delegates parquet 24 delegates seating rows 30 delegates</p>